

Railway Level Crossings

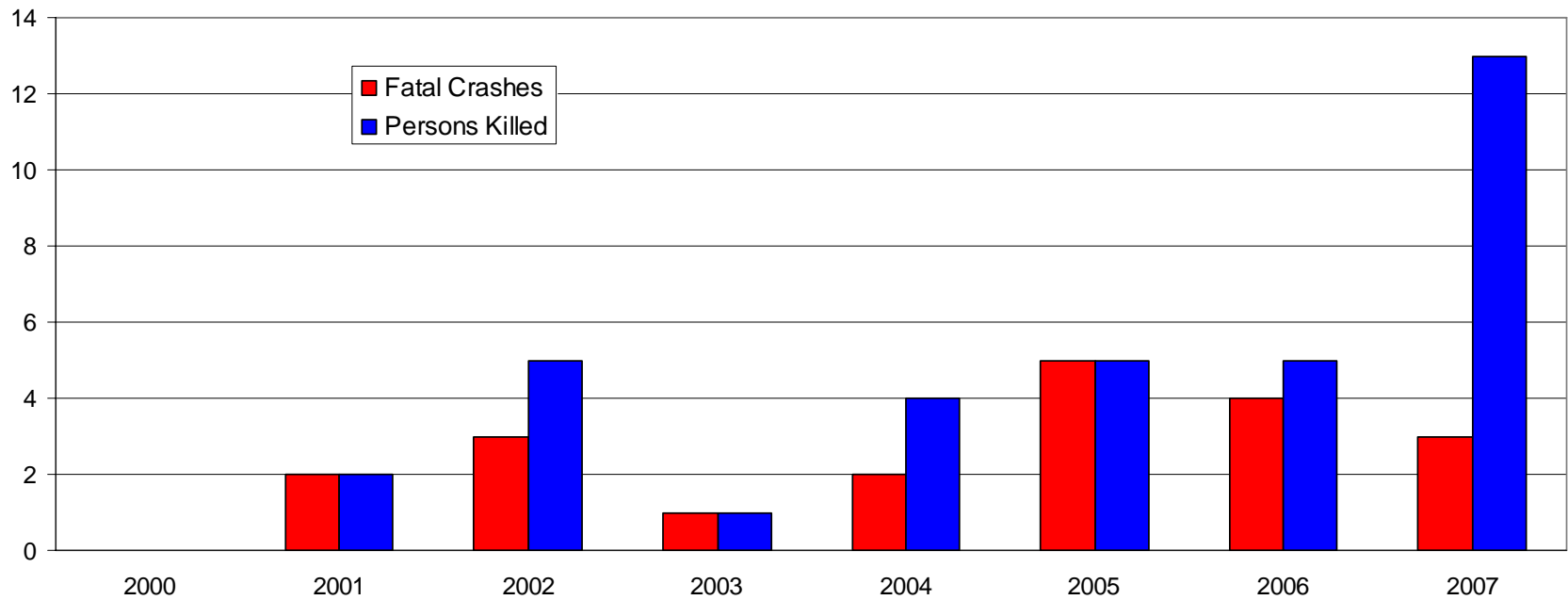


- Size of the problem
- Strategic framework
- Stakeholders
- Role and responsibilities
- Programs and actions
- Conclusion

Scale of the problem

Fatal crashes

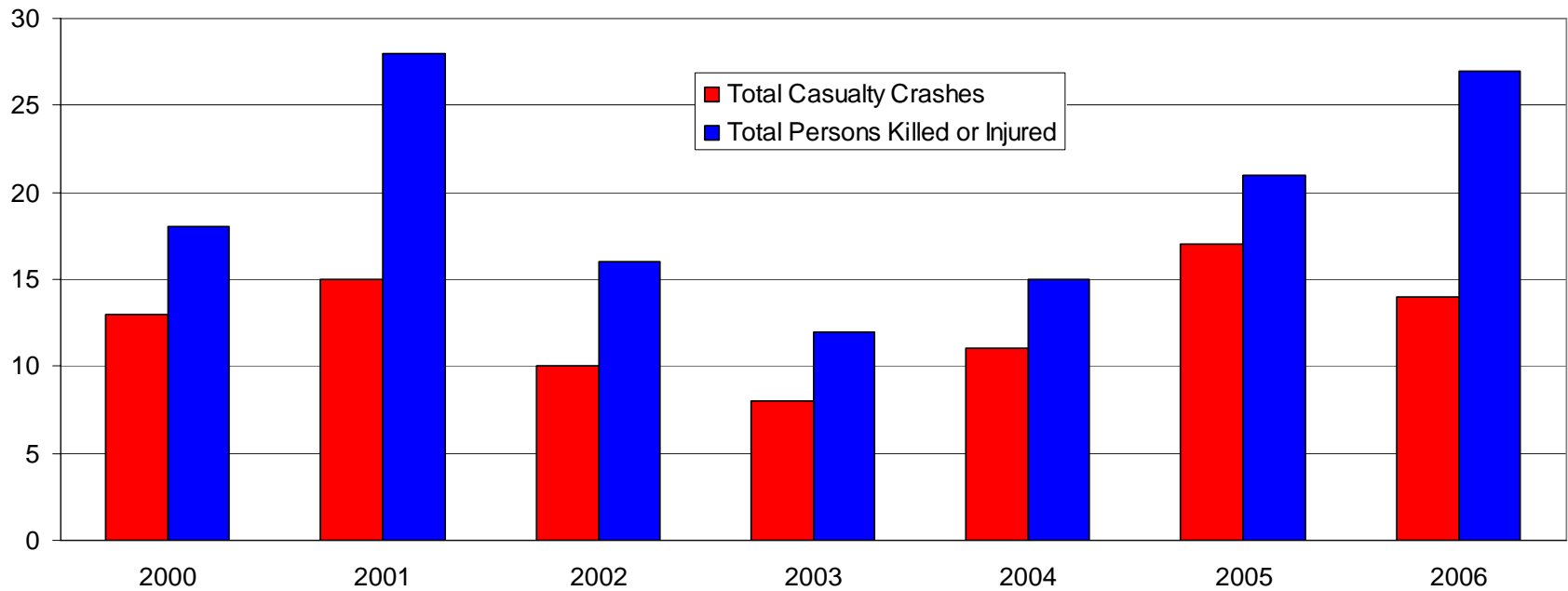
Fatal Crashes involving Trains - Victoria 2000 to 2007



Scale of the problem

Casualty crashes

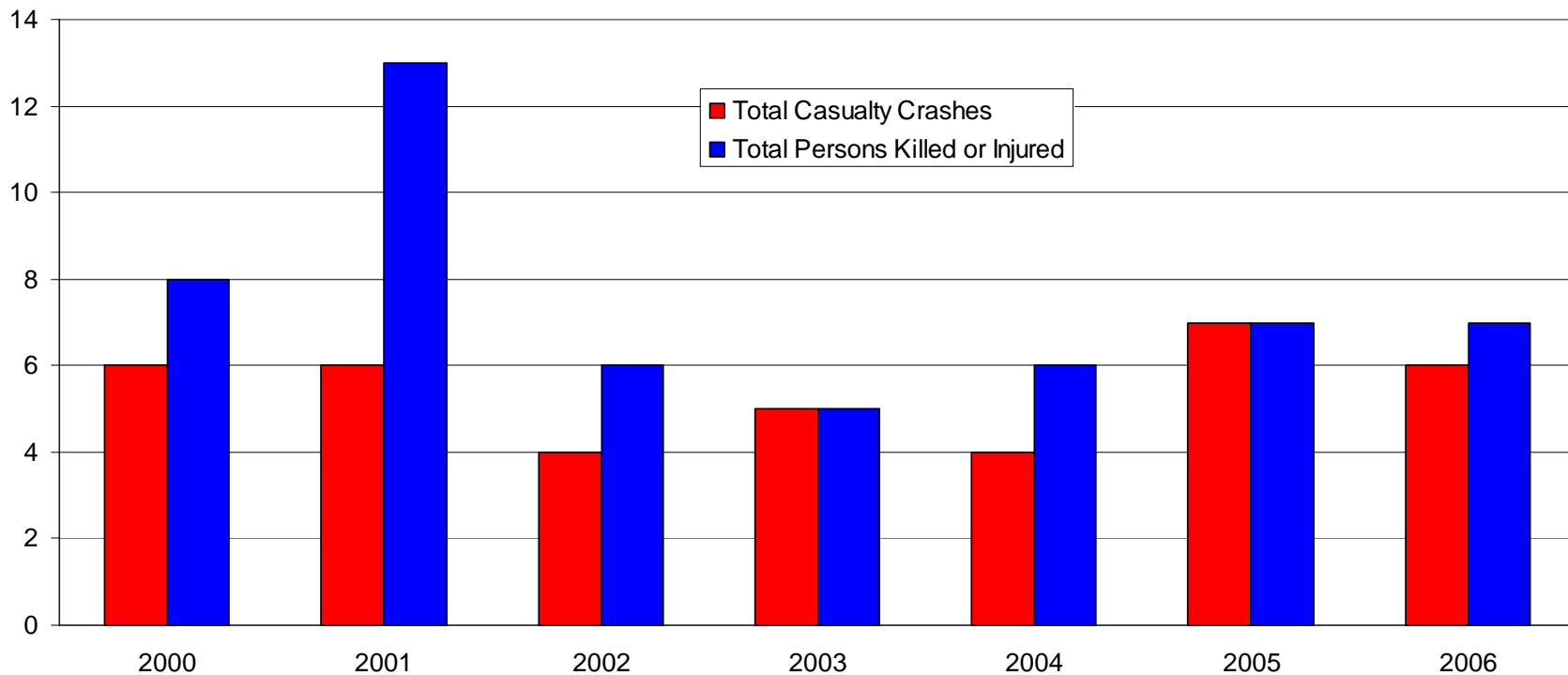
Casualty Crashes involving Trains - Victoria 2000 to 2006



Scale of the problem

Casualty crashes Melbourne

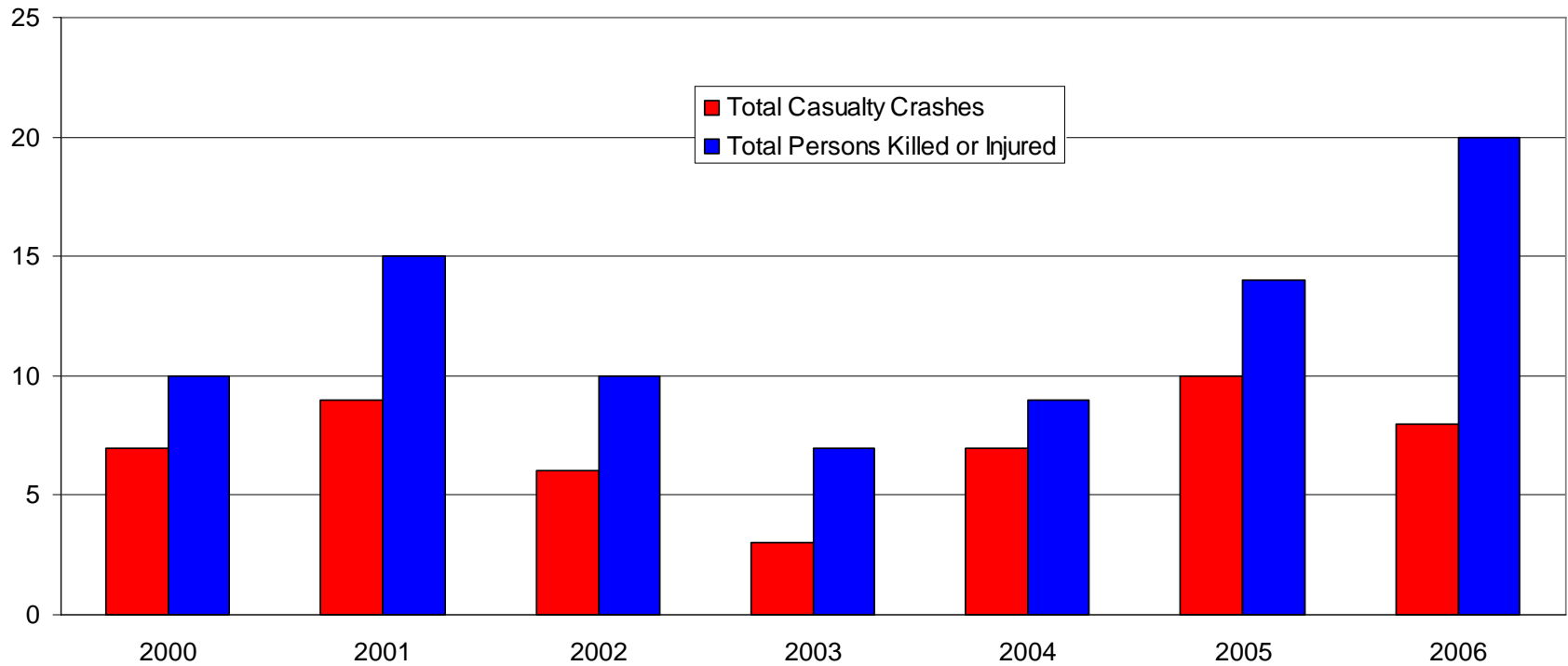
Casualty Crashes involving Trains - Metropolitan Melbourne
2000 to 2006



Scale of the problem

Casualty crashes country

Casualty Crashes involving Trains - Country Victoria
2000 to 2006



- Growing Victoria Together
 - Growing & linking all of Victoria
- *Meeting our Transport Challenges*
 - Building a safer, more secure network
- *arrive alive 2008-2017*
 - Aims to reduce deaths and serious injuries by 30 per cent
 - Strategy & first action plan contains initiatives to improve rail level crossing safety

National approach

- Austroads;
- SCOT/TACE;
- Roads and Rail Modal Groups;
- NTC.

- Department of Transport
 - Public Transport Division
 - Public Transport Safety Victoria
- VicTrack
- Rail Operators
- VicRoads
- Municipalities
- Rail Unions

- Department of Transport
 - Public Transport Division
 - Chair Railway Level Crossing Safety Co-ordination Committee
 - Manage Contracts with Rail Operators including of Leasing Infrastructure
 - Manage Funding for Level Crossing Upgrades
 - Manage Level Crossing Upgrade Program
 - Australian Level Crossing Assessment Model (ALCAM)
 - Public Transport Safety Division:
 - Responsible for overseeing Public Transport Safety
 - Auditing safety aspects of Rail Safety Act

■

- VicTrack
 - Own and lease infrastructure to DoT
- Rail Operators
 - Operate trains and maintain infrastructure
- VicRoads
 - Maintain rail related infrastructure on Arterial Roads
- Municipalities
 - Maintain rail infrastructure on Local Roads
- Rail Unions
 - Represent workers interests on management committees

- Railway Level Crossing Safety Steering Committee- Overall co-ordination of Railway level Crossing Safety (Members: DoT (Public Transport Division and Public Transport Safety Victoria), VicTrack, VicRoads, V/Line, MAV, RTBU)
- Railway Level Crossing Safety Working Groups - Technical, Level Crossing Upgrade Program (Members above plus other Rail Operators);

- No new level crossings without Ministerial approval;
- Level Crossing Upgrade Program – Installing active control of road/rail level crossings (Flashing Lights or Flashing Lights and Boom barriers) or for pedestrian crossings;
- Grade separations - major projects constructed to improve traffic flow on arterial roads such as Middleborough Road, Box Hill.

- Measures to improve rail level crossing safety including:
 - Installation of Active Advanced Warning Signs at highway and high volume sites (53 locations) (DoT (formerly VicTrack));
 - Installation of rumble strips to alert motorists that they are approaching rail level crossings (200 locations) (VicRoads).
 - Improving line of sight at level crossings including vegetation removal (Rail Operators and Road Managers);
 - Trial the use of camera technology to improve compliance and deter unsafe behaviour at level crossings (Dept of Justice);
 - Reduction of speed limits at high road speed rural arterial road rail level crossings (75 locations) (VicRoads).

- Rail Safety Act: Rail Operators and Road Managers responsible for safety at railway level crossings.
 - By mid 2010 required to have, for all level crossings, Safety Interface Agreements including a risk assessment;
 - Investigate and address issues identified by the detailed ALCAM process.

Trials of:

- Intelligent Transport Systems:
 - Radio or transponder based warning systems:
 - Audible alert overriding vehicle's radio;
 - Low Cost Warning Devices;
- Conventional traffic signals.

- Rumble strips;
- Active advance warning signs;
- Traffic lights;
- Enforcement camera technology.

- Railway Level Crossing crashes are a relatively small number compared to all road crashes but have risk of catastrophic crashes;
- Actions to improve safety at level crossings are underway.