

# L2P – Helping learners get their Ps

Robyn Seymour  
L2P Program Manager  
VicRoads

# Background

- Volunteer supervisor projects Sunbury Rotary, Frankston – pioneers
- Ballarat initiative – locally resourced
- GLS – 120 hours from July 1 2007
- Government concern where cars/drivers not available
- \$9million TAC fund allocated
- Community based model endorsed

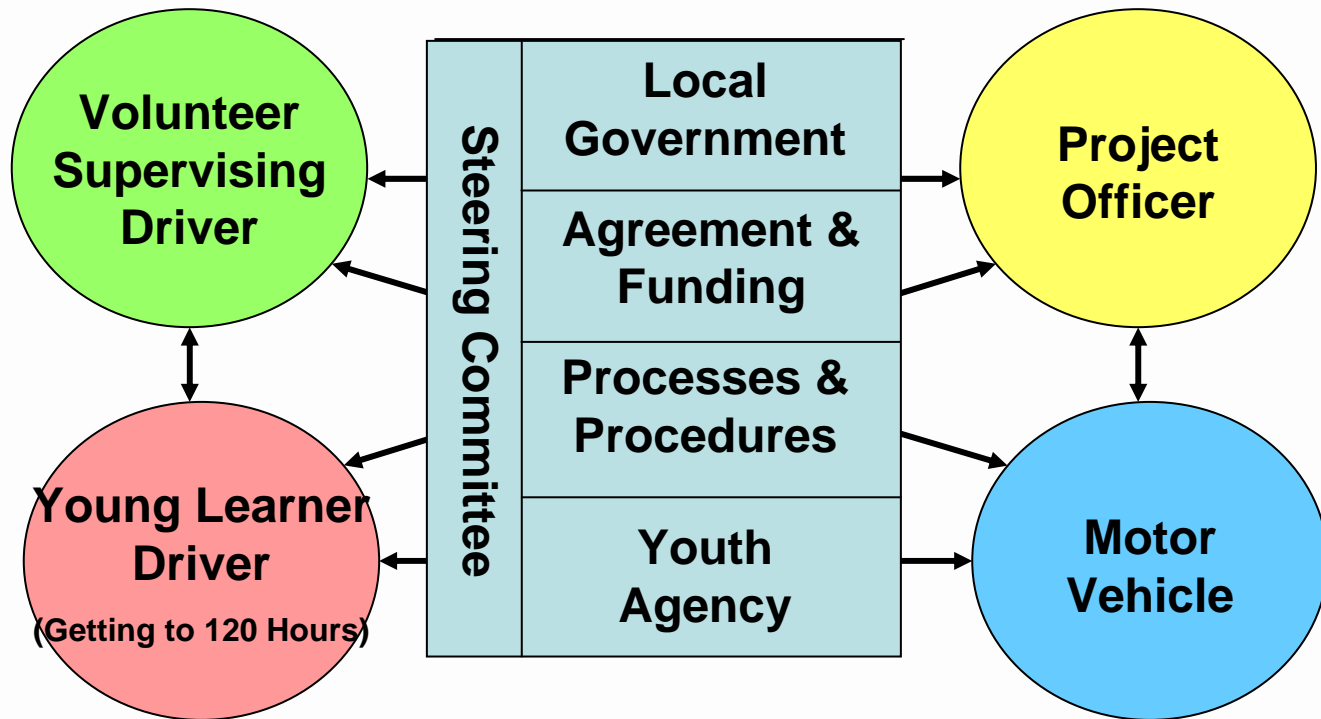
# Goals

- Reduce crash and injury rate of young novice drivers by ensuring they obtain 120 hours supervised practice
- Increase equity of opportunity for all young Victorians to be safer and obtain a driver's licence

# Principles

- Partnership focus – LG, local agencies, VicRoads, community, local business
- Local Govt-VicRoads funding contract base
- Risk minimisation - mandatory & guidance systems
- Volunteer supervisors - trained
- Supervised practice not driving instruction
- Learner participant's commitment
- Local Steering Committee

# L2P organisational structure



# Funding

- Covers operational & management costs
- 3 year funding guarantee
- Year 1, two phase funding – set up and operational
- Subsequent years – annual budget
- Local support – vehicle (depreciation), in kind
- Project delivery – local agency, council, other
- MOU as basis of delivery agreement

# Progress

- Maribyrnong, Ballarat, Bass Coast, Geelong
- Nine areas developing applications
- Follow up mail out after conference
- Key documents prepared
  - Application form
  - Resource Kit
  - Guidelines for Supervising drivers
  - Incorporating Professional Instruction guidelines

## Why the contract emphasis with councils?

- Community Accountability – steering committee status
- Stakeholder confidence
- Free from vested interests
- Local coordination and influence
- Program sustainability
- Local management capacity
- Familiarity with government funding systems

## What are the risks and how addressed?

- Road crash – lower than all other drivers, comprehensive insurance
- Injury from crash – 4 star vehicle, TAC, maintenance, crash reporting
- Volunteers liability – low – volunteer insurance, training, supervision not instruction, prof. indemnity cover
- Injury to member of public – low - action off-road minimal
- Council liability – possible – procedures to follow, CM Plus agreement, MOU for delivery

# Further information

**VicRoads L2P Project Manager**

**Ph: 03 9854 2812**